

HEALTHY BY DESIGN

Morten Nielsen

www.ifhp.org

@IFHP



**Committed to
liveable
cities since 1913**



bpd



CENTRE for
**Liveable
Cities**



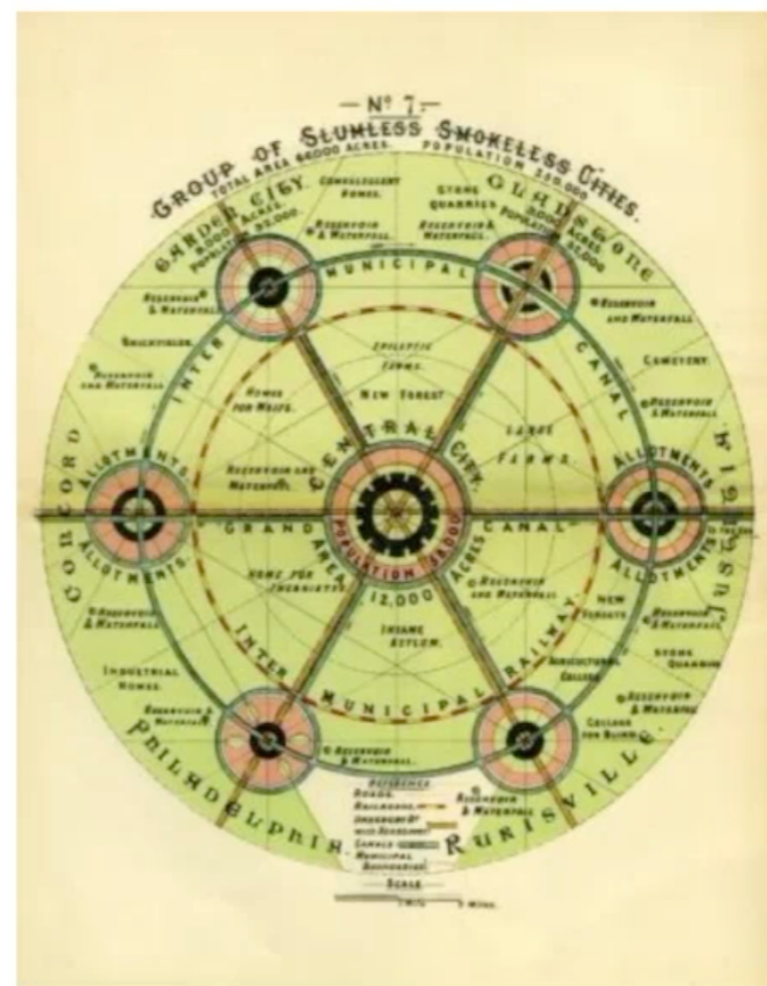
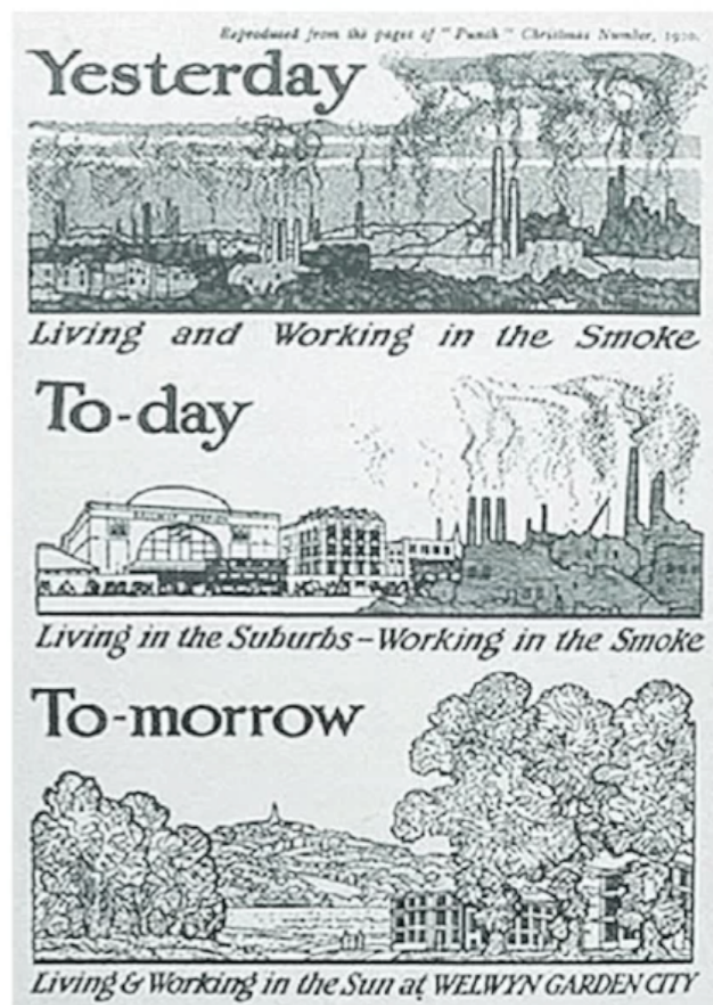
**cities
changing
diabetes**



**LSE
Cities**

IFHP

International
Federation for
Housing and
Planning



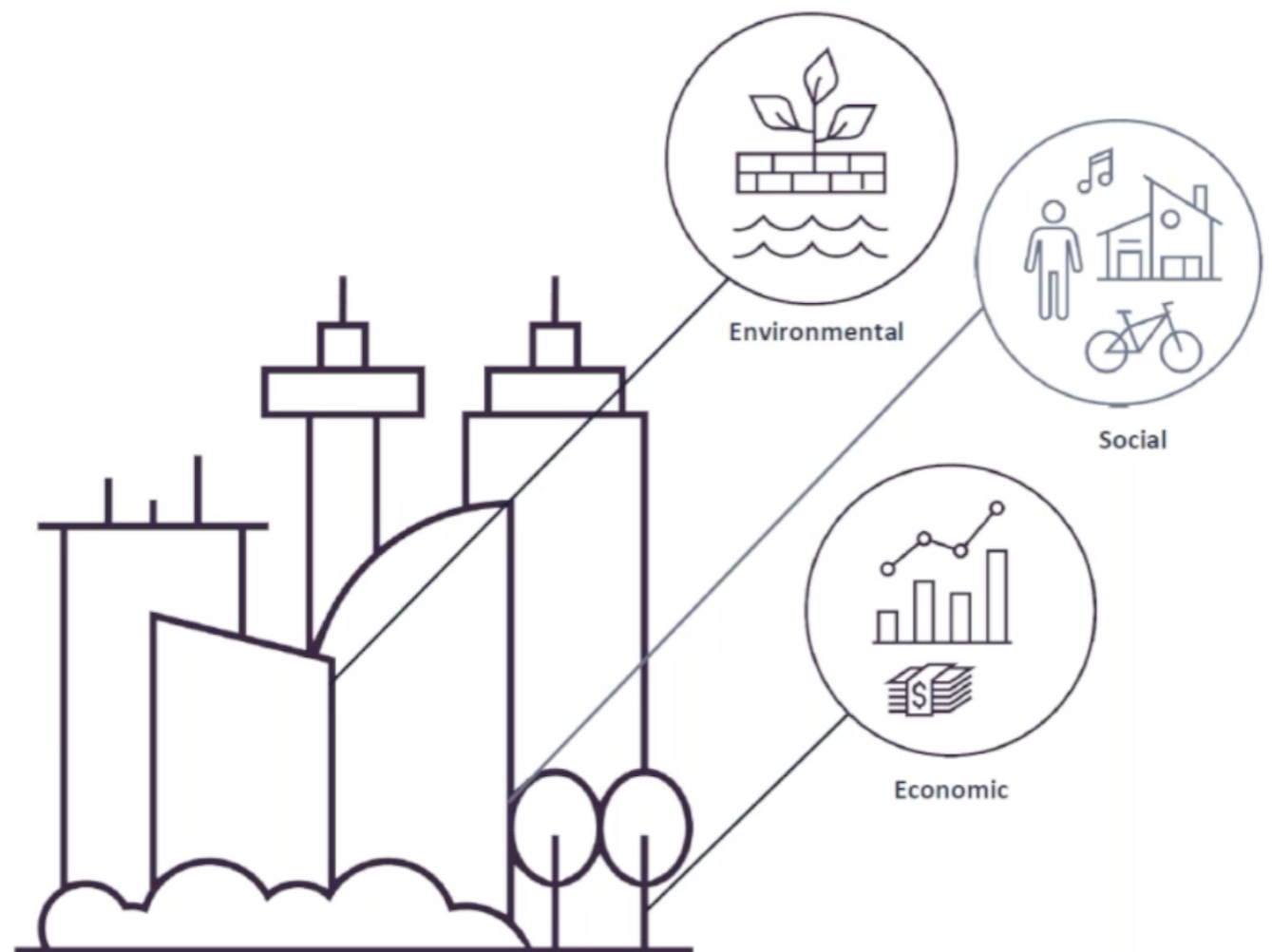
Melbourne



Healthy by Design

A holistic and integrated approach to sustainable cities.

Health & Well-being was already in scope but COVID19 has amplified its importance.



Healthy by Design – examples of attention points

- Indoor spaces: apartment, office, school
 - School toilets
 - Flexible spaces to isolate infected people
 - Outdoor spaces: balconies, terraces, gardens, playgrounds
 - Building quality: Ventilation systems, windows, surfaces
-
- Shared spaces: social life and community building
 - Density versus urban sprawl
 - Working from home
 - Access to nature (air and light)
 - Friendliness to bicycles and pedestrians
 - Access to jobs, education and culture